



Guided
surgery

BY BIOTECH DENTAL

GUIDED SURGERY

Safe
implantology



01



Guided surgery

by Biotech Dental

Choosing guided surgery means guaranteeing **optimal implant placement** thanks to a custom-made **surgical guide** using a **virtual planning** software.

Benefits

- ▶ Precision

- ▶ Predictability

- ▶ More security

- ▶ Reproducibility

- ▶ Minimally invasive procedure

- ▶ Immediate loading
(stackable guide)

- ▶ Time saver



02

Different **types** of guided surgery

Biotech Dental manufactures
tooth and mucous support
guides

PILOT

- ▶ Guided departure
for freehand
surgery

Using a guide, **secure the first drilling** (pilot drill) and **faithfully place** one or several implants according to the planning.

Surgery continues (without a guide) with a conventional drilling sequence followed by the implant placement.



FULL

- ▶ Guided implant placement from start to finish

Full guided surgery is performed **using a guide and a guided surgery kit.**

The use of of this medical device enables the procedure to be guided **from the pilot drill to the implant placement.**



STACKABLE

- ▶ Stable guided surgery, prosthetic restoration in the same session

Fully guided procedure **for total arch implant reconstructions.**

Connecting the guide's different levels helps you to **perform an immediate loading surgery**, as well as the temporary prosthesis placement in a single session.



03

Dedicated **tools**
for the placement of
Contact™ implants



PILOT

kit

Surgical kit including **3 drills** of length **20 mm / 24 mm / 28 mm** dedicated to pilot surgery.

The Biotech Dental surgery kit is used for the rest of the procedure.



Ref: KSFE20KIT

Contact™
implant range

Ref: TROUSSEKONMULTI

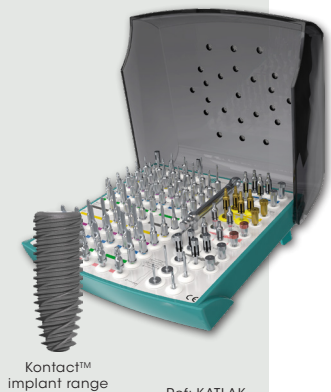
ATLASURGERY 2

kit

Kit dedicated for full guided surgery and **stackable guide surgery**.

A single kit, without spoons or stops, for all Contact™ implant

Compact - Understandable - Can be dismantled



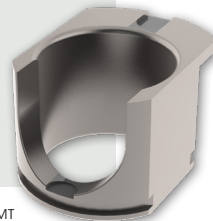
Contact™
implant range

Ref: KATLAK

Mastertube

WITH LATERAL OPENING

- ▶ **Easy access** for **posterior** implant placement.
- ▶ Easy access in cases of limited mouth opening to **gain up to 4mm of insertion height**.
- ▶ Vestibular and palatal notches and laser marking to **control the position of the implant indexing**.
- ▶ Neck to **control the vertical position of the mastertube** in the guide.

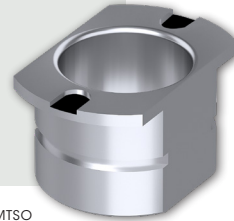


Ref: KATLAMT

Mastertube

WITHOUT LATERAL OPENING

- ▶ **360° closed** mastertube over the whole height for more **instruments guidance**.
- ▶ Recommended for **implanting sites with easy access**.
- ▶ Vestibular and palatal notches and laser marking to **control the position of the implant indexing**.

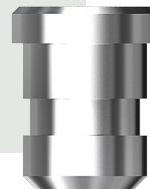


Ref: KATLAMTSO

Mastertube

FOR PILOT GUIDED SURGERY

- ▶ Specific mastertube **optimised to use the pilot drills kit**.



Ref: KMT20



04

LaGalaxy

One solution,
infinite possibilities

LaGalaxy is a secured digital platform gathering **all products and solutions of Biotech Dental Group** and its partners.

It is also a solution for storing and securing health data.

A highly technological new tool dedicated to **support and simplify the practitioner's daily life.**

- ▶ **Direct connection**
from LaGalaxy to the guided surgery
ordering platform.
www.biotechgalaxy.com

Platform for guided surgery and bone reconstruction

An ergonomic and intuitive
platform **dedicated to order all
types of guides.**

biotech-planningcenter.com



Freedom

to choose your flow

05



PLANNING CENTER

- ▶ We plan, all you have to do is approve
- ▶ Benefit from our expertise
- ▶ Customise your service by selecting the steps to delegate

PLANNING CENTER

You call on
Experts

COLLECT

patient's data
(DICOM, impressions, photos, ...)



CREATE

patient's form and transfer all data on
the Biotech Planning Center



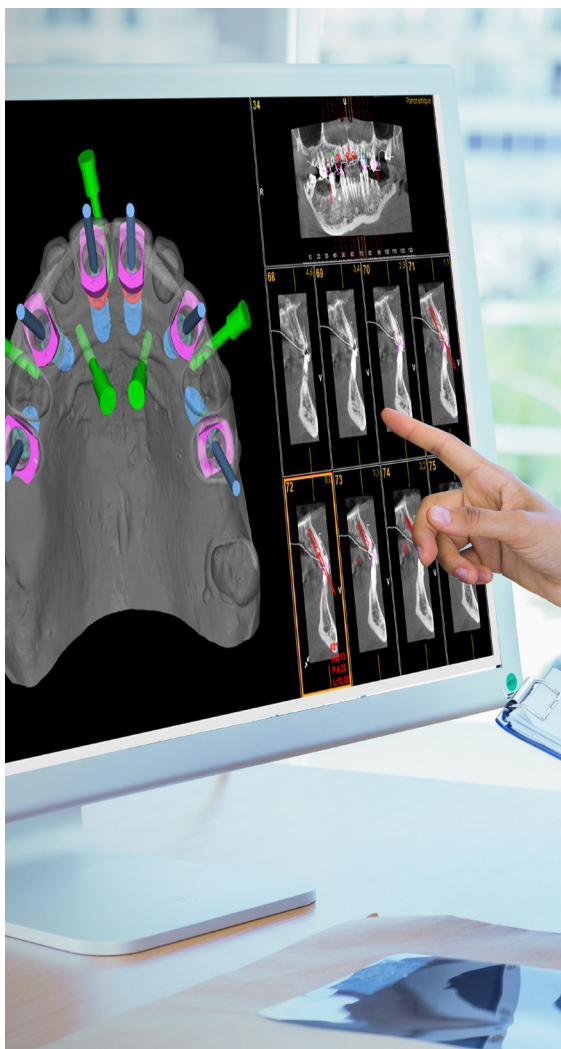
APPROVE

the digital implant project designed
by our experts



RECEIVE OR PRINT

your surgical guides



NEMOSCAN

- ▶ Own your planning software
- ▶ Plan in complete freedom
- ▶ Benefit from a digital multidisciplinary platform for dentistry

NEMOSCAN

You are **the owner**
of Nemoscan
software

COLLECT

patient's data
(DICOM, impressions, photos, ...)



PLAN

the implants placement according to
the quality and quantity of available bone
and the anatomical structures



CONCEIVE

your surgical guides



RECEIVE OR PRINT

your surgical guides



PLAN

your extractions / implanting



06

100% FRENCH
production

Our guides are manufactured in our Biotech Dental Digital centre in Scionzier, Haute-Savoie.

In compliance with the strict **ISO 13485** quality standards.





Guided
surgery

BY BIOTECH DENTAL

BIOTECH DENTAL



305, Allées de Craponne
13300 Salon-de-Provence - France

+33 (0)4 90 44 60 60

CustomerCareService@biotech-dental.com

biotech-dental.com

biotechgalaxy.com

biotech-planningcenter.com

biotechbonerevolution.com

CHI-BR-EN_Rév.00_03/2023