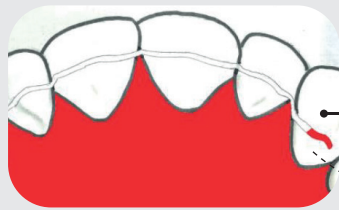
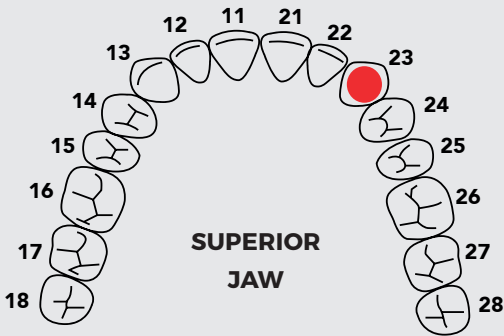


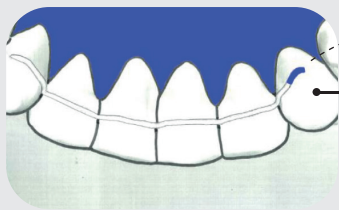
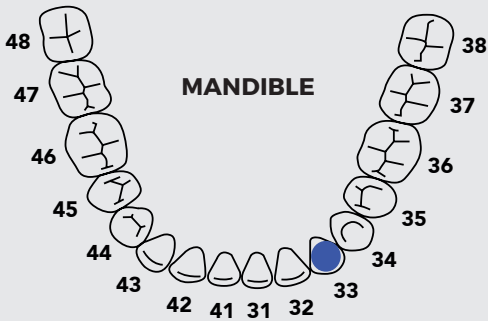
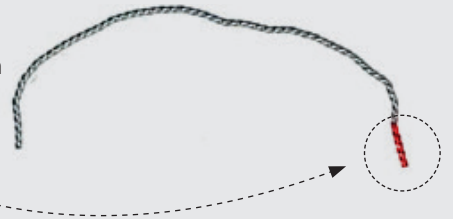
SMILERS® FIL DIRECT GLUING PROTOCOL

COLOURED MARKINGS ON WIRES AT 23 AND 33



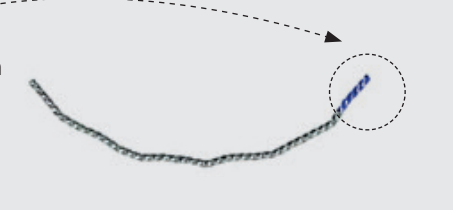
ENDO-ORAL VIEW
WITH MAXILLARY WIRE

Tooth
23

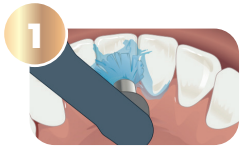


ENDO-ORAL VIEW
WITH MANDIBULAR WIRE

Tooth
33



- **Classic preparation with etching** (Advised to have orthodontic etching with GC)
- **Glue with primer metal** (GC Ortho Connect Flow advised)



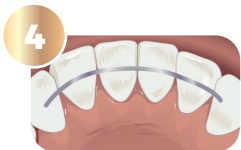
Clean



Etching
(GC Ortho Etching Gel advised)



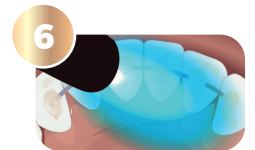
Rinse / Dry



**Wire positioning with or
without transfer guide**



Glue with primer metal
(GC Ortho Connect Flow advised)



Polymerisation