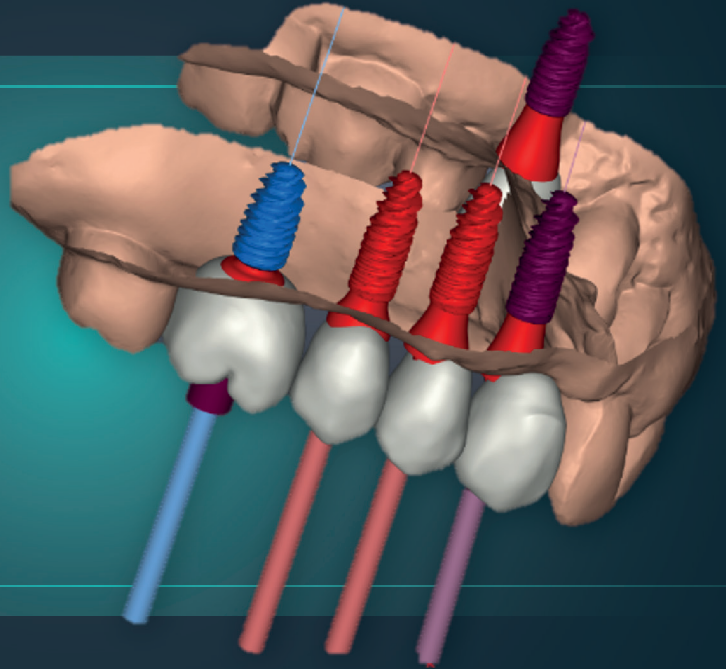




BIOTECH DENTAL

Guided surgery

by Biotech Dental



**Worry-free
implantology**

Guided surgery by Biotech Dental

Choosing guided surgery means **guaranteeing the optimal placement of implants** thanks to a bespoke surgical guide using **virtual planning software**.

THE BENEFITS



Risk control



Precision



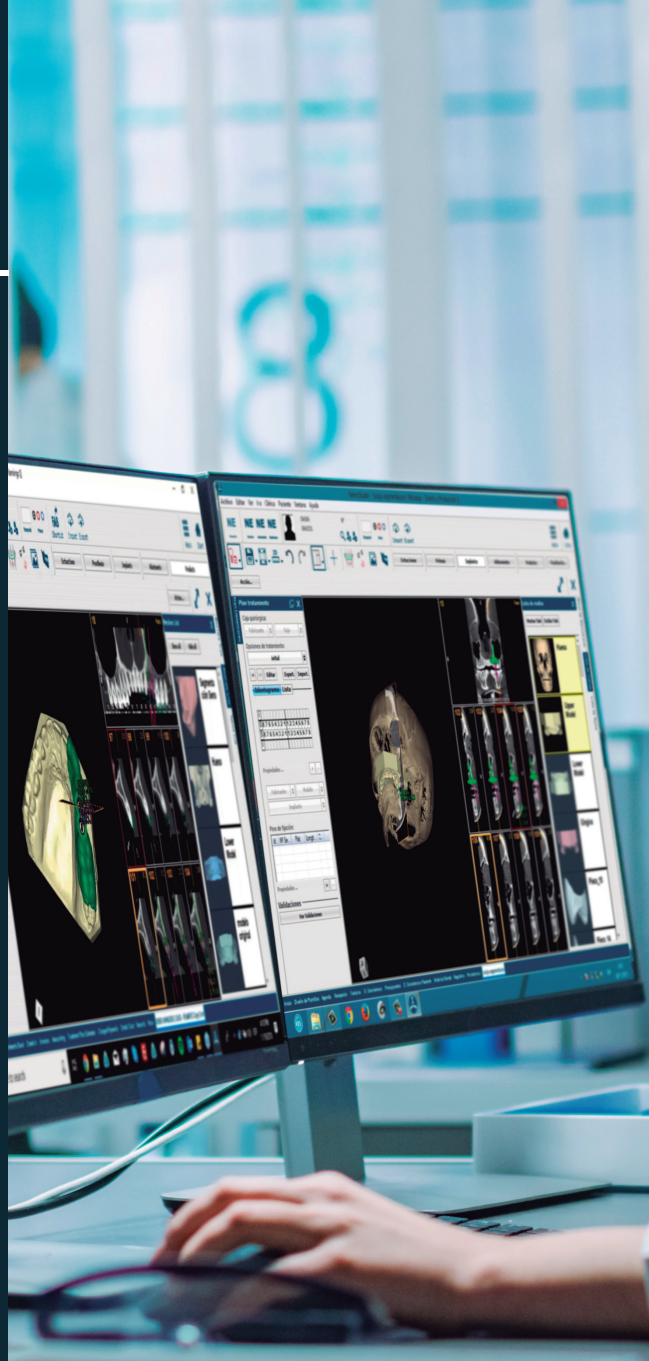
Reproducibility



Avoidance of anatomical obstacles



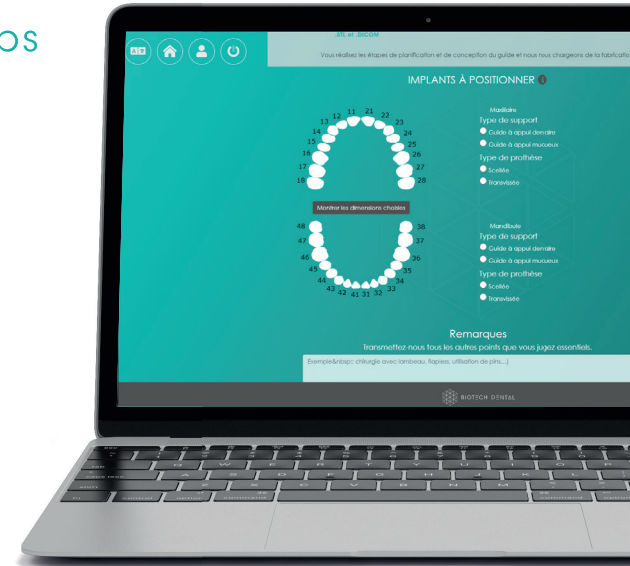
Planning available online



Delegate the different steps as you prefer

The Planning Center

- ✔ We do the planning for you and all you have to do is approve it
- ✔ Benefit from expert knowledge and skills
- ✔ Personalise your service by choosing the steps that you are delegating according to your preferences



Plan: The NemoScan software

- ✔ Become the owner of your planning software
- ✔ Be free to do your own planning
- ✔ Take advantage of a multidisciplinary digital platform for dentistry



YOU CALL ON EXPERTS



The Planning Center

<https://biotech-planningcenter.com>

The Planning Solutions



1

COLLECT

▶ patient data
(DICOM, impressions, photos, etc.)

2

CREATE

▶ the patient record and transfer
the data onto the Biotech
Planning Center website

3

CONFIRM

▶ the virtual implant project
produced by our experts

4

RECEIVE OR PRINT

▶ your surgical guides



YOU ARE THE SOFTWARE OWNER



NEMOSCAN

1

COLLECT

▶ patient data
(DICOM, impressions, photos, etc.)

2

PLAN

▶ the placement of implants according to
the quality and quantity of bone available,
as well as anatomical structures

3

SIMULATE

▶ your extractions/implantations

4

DESIGN

▶ your surgical guides

5

RECEIVE OR PRINT

▶ your surgical guides



YOU CALL ON DENTISTRY EXPERTS



The Planning Center

<https://biotech-planningcenter.com>

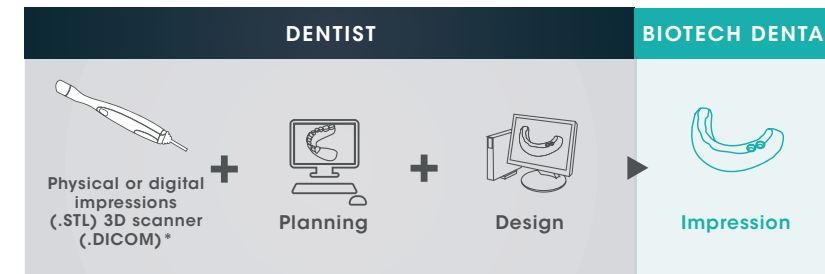
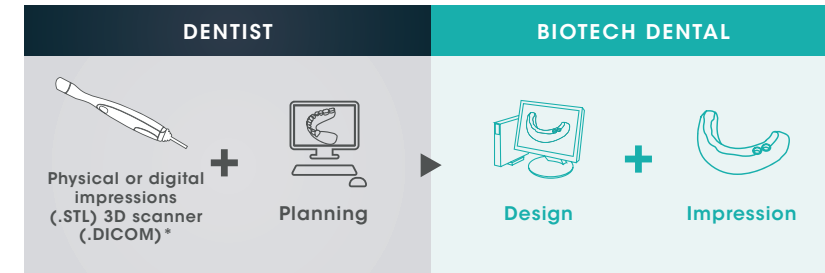
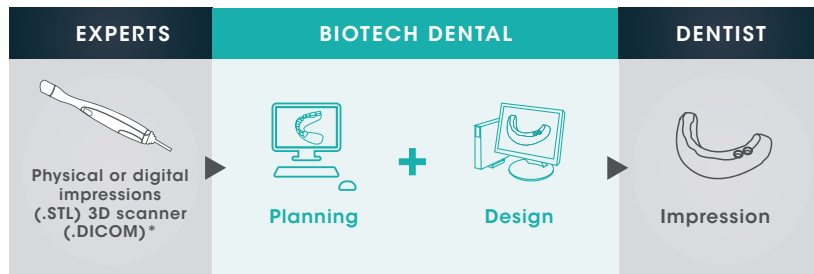
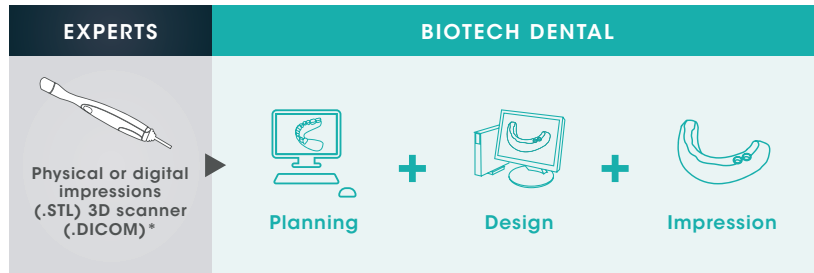
Services Tailored to your Needs



YOU ARE THE SOFTWARE OWNER



NEMOSCAN



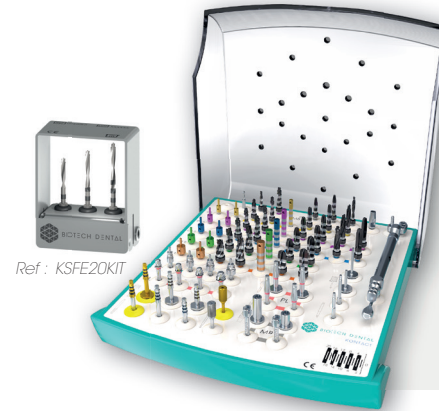
Our Guidance Instruments

PILOT-GUIDED SURGERY:

guided pilot drilling for freehand surgery

Using a guide, secure the first drilling site (pilot drill) and faithfully transfer the position of the implant, that was decided during planning, to the mouth.

Surgery is completed without a guide using a standard drilling sequence followed by the placement of the implant.



Ref: TROUSSEKONMULTI

REQUIRED EQUIPMENT

- ▶ Pilot drills for guided surgery
- ▶ 3 drills (20 mm / 24 mm / 28 mm long) to cover every situation
- ▶ Conventional surgery kit

FULLY GUIDED SURGERY:

Guided implant placement from start to finish

Fully guided surgery is performed using a guide and a guided surgery kit.

By making full use of the guide from pilot drilling to implant placement, the security of the actions taken is maintained until the end of the procedure.



Ref: KATLAK

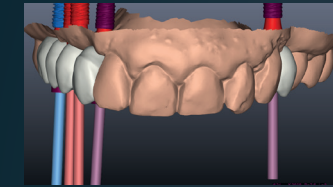
REQUIRED EQUIPMENT

- ▶ Atlasurgery™ 2 complete guided surgery kit (KATLAK) by Biotech Dental

Our Guides

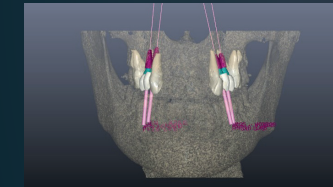
▶ Pilot

- only guides the pilot drill of the implant sequence



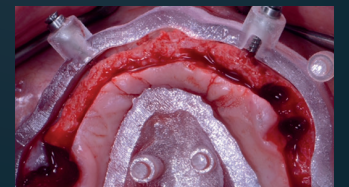
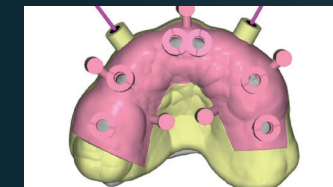
▶ Surgical guide for full guidance

- allows all pilot drilling of the sequence as well as the guided placement of the implant



▶ Step guide

- several floors that fit together or magnetize to each other



Different types of support

The guides can have **different support surfaces for their positioning in the mouth:**

DENTAL-SUPPORTED GUIDE

- **Preferred method whenever possible** because these guides are the most stable ones. This guide will be fixed on the residual teeth which borders the sectors to be implanted.

MUCOSAL-SUPPORTED GUIDE

- **Method suitable in cases of full edentulism.** This guide will be placed on the gingival mucosa and generally transfixed (by screws or keys).



Which guide should be used according to the clinical case

	PILOT guide	FULL guide	STEP guide
All types of prosthesis (sealed or screwed)	✓	✓	✓
Extraction / implantation management	✓	✓	✓
Physical impressions	✓	✓	✓
Digital impressions	✓	✓	✓
Biotech Planning Center	✓	✓	✓
Nemo	✓	✓	✓
Use of a classic surgical kit (unguided)	✓	✗	✓
Drilling + guided placement of implants	✗	✓	✓
Dental support	✓	✓	✓
Mucosal support	✓	✓	✓
Extraction/implantation management on the dental support of the guide	✗	✗	✓
Guided bone reduction	✗	✗	✓
Immediate loading	✗	✓	✓

ATP38
PHOTOBIO-MODULATION

Photobiomodulation at the service of dental care



BIOMATERIALS
BY BIOTECH DENTAL

High-performance regenerative solutions



WOW®

Optical impression at your fingertips with the WOW® intra-oral scanner



BIOTECH DENTAL DIGITAL

Made-to-measure prosthesis
Removable prosthesis
Circle Technology

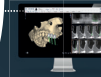


Guided surgery

by Biotech Dental

NemoScan

The 3D software solution for making diagnoses and planning your implant treatments



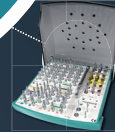
Implantology
BY BIOTECH DENTAL

More than 34 years of expertise building the future of implants



GUIDED INSTRUMENTS

High-performance and technical excellence combined



Guided surgery
by Biotech Dental

Worry-free implantology



BIOTECH DENTAL

305, Allées de Craponne, 13300 Salon-de-Provence - France

Tel. : +33 (0)4 90 44 60 60 | Fax : +33 (0)4 90 44 60 61

info@biotech-dental.com | www.biotech-dental.com

Surgery kits and pilot drill kit for guided surgery: Biotech Dental assembler.

This system is an assembly of medical devices - ATP38®: manufacturer Swiss Bio Inov. Class IIa MD. CE0459 - WOW®: manufacturer Scan4all SAS. DM class I. EC - NemoScan: manufacturer Software Nemotec, S.L. Class Im MD. CE2797 - Made-to-measure and removable prostheses: manufacturer Biotech Dental Digital. Made-to-measure MD.

All of these medical devices must be used by qualified and trained healthcare professionals. All of the trademarks are the responsibility of their respective manufacturers. Refer to the assembly instructions or the instructions for use of the medical devices for information. Not reimbursed by the social security system. Biotech Dental - 305 Allées de Craponne - 13300 Salon-de-Provence - France. Simplified company limited by shares with a capital of €24,866,417 - SIRET number : 795 001 304 00018 - VAT No: FR 31 79,500 13 04 - Trade and companies register of Salon de Provence 795 001 304 - Ident No. VAT FR 31 79 500 13 04. Images for illustration purposes only.

Do not litter. VALLIERE Printing Company - 163, Avenue du Luxembourg - ZAC des Molières - 13140 Miramas - France.