



BIOTECH DENTAL DENTEO



CATALOG





BIOTECH DENTAL

BIOTECH DENTAL GROUP, 2.0 DENTAL OFFICE PARTNER.

Since its creation in 1987, Biotech Dental has been committed to develop a strong relationship of trust with dental surgeons and dental technicians.

Together we devise and develop product ranges even more tailored to the challenges of the future. We bring together customers' expectations, innovation and technology.

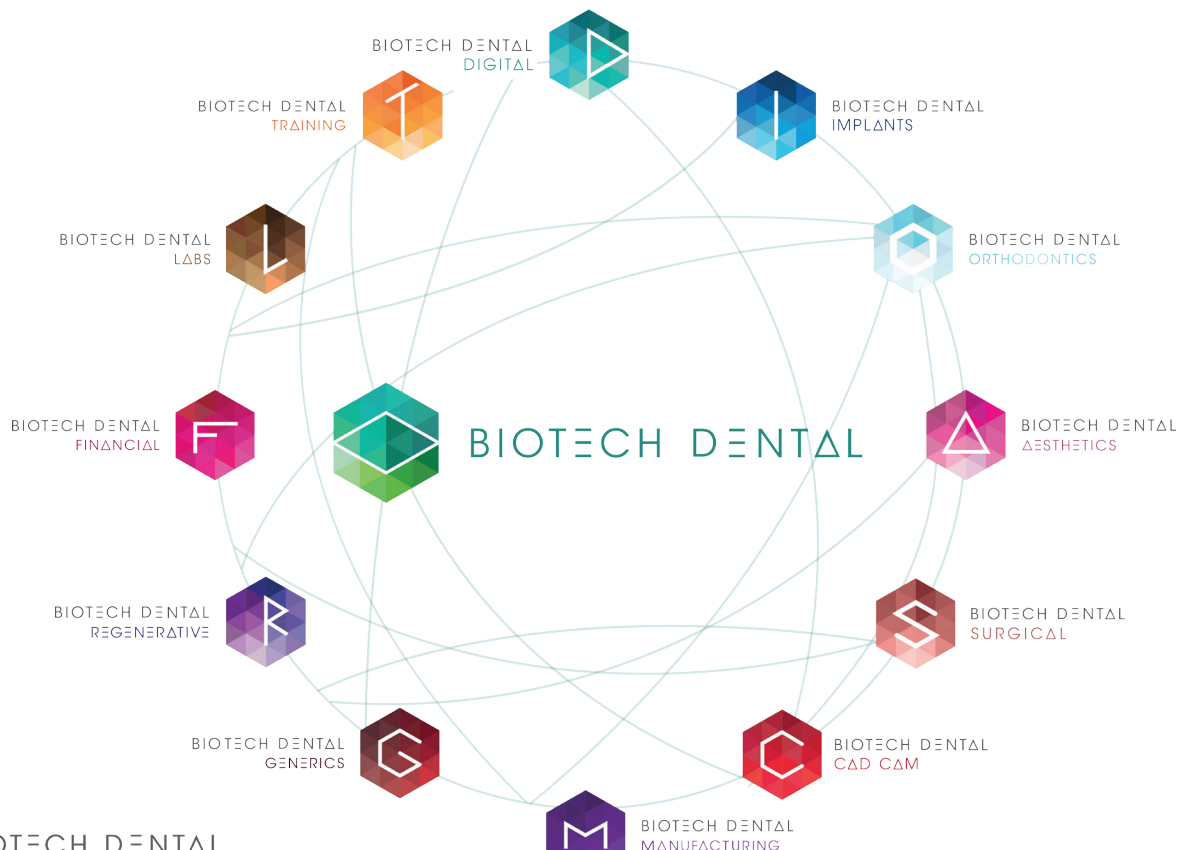
Giving dentists the ability to suggest the best products at the best price to their patients is Biotech Dental's primary goal.

With more than a million dental implants sold, we have contributed to improving the life of thousands of patients throughout the world thanks to all the dental surgeons who have put their trust in us. Backed by our expertise and know-how, we have chosen to be pioneers of this development through innovative technologies. Over these last few years, we have incorporated fresh know-how and invested more than 10% of our turnover into research and development so that we can develop and propose innovative and cutting-edge solutions.

Nowadays, we are a partner of choice for dental practitioners. We offer our customers a wide range of dental care products and services so they can meet their patients' various needs.

Innovation and technology at the service of dentists to help them provide affordable excellence to patients: this is BIOTECH DENTAL's ethical motto.

Philippe VERAN
CEO



CONTENTS

Presentation	p.4
Synopsis	p.8
Anthogyr Axiom	p.9
Astra Tech & Euroteknika	p.12
Biotech Dental	p.16
Nobel Active & Replace CC	p.17
Nobel Replace	p.21
Tekka Inkone	p.25
Tekka Progress & Serf EVL	p.29
Zimmer Screw Vent & MIS	p.33
Straumann	p.38
CAD CAM	p.39
Cerec	p.41
Final screw	p.42
Instruments	p.43

The Denteo prosthetic parts are compatible with the brands mentioned above.



All trademarks are property of their respective owners.



DENTEO
BIOTECH DENTAL

DENTEO is a French company specialized in conception, manufacture and sale of dental PROSTHETIC COMPONENTS compatible with the major implants system on the market.

Our devices meet the highest quality requirements in terms of conception and manufacturing, and at a cost corresponding to the market constraints evolution.

CONCEPTION - MANUFACTURING - SALE



With many years of strong experience in development and manufacturing of medical devices, our products meet the highest health care professionals expectations in terms of design, quality and price.

The products that we develop, produce and sale are guided by the needs of our customers.

OUR KNOW-HOW AT YOUR SERVICE



OUR VISION

At DENTEO, we believe that the best technologies are proven technologies.

We are always looking for providing smarter and easier solutions to our customers. We believe that we can offer products at better price without changing the quality.

We create solutions to give to doctors and patients the greatest satisfaction for optimized costs.

OUR COMMITMENT

Our responsibility is to create and to continually improve profitable conditions for everyone through long term collaborations.

Our development is the result of teamworks with our customers and suppliers. Our **INTEGRITY** and our **HONESTY** are present in every decisions. It is also our assignment to respect our collaborators as our partners.

We must maintain in good order the property we are privileged to use, protecting the environment and natural resources.





DENTEØ
BIOTECH DENTAL

THE QUALITY IS OUR FIRST PRIORITY

Because we are responsible toward the patients, the doctors and all the persons using our products, the quality is our first concern.

FRENCH MANUFACTURING

All our suppliers are specialized in high quality medical devices manufacturing and are compliant with the highest regulatory requirements.

In order to ensure the quality of our products, we develop strong partnerships with our partners and we select them regionally. Thus, our parts are entirely produced in France.



CE MARKING AND ISO CERTIFICATES



All our products are CE marked.



Moreover, from the conception to the distribution, including the manufacturing, our certifications ISO 9001 and ISO 13485 are pledges guarantees for the compliance of our products to the regulatory requirements and the customers expectations.



TRACEABILITY

We ensure the complete tracking for our products, from the raw material to the implantation. Our parts are individually packaged.

Each component is labeled in order to ensure the accurate traceability of the parts.



In our industrialization process, we are aligned with the better practices in all our activity. Our partners help us to answer at customer's requirements in term of cost, quality, service and flexibility.





SYNOPSISYS

		Compatible							Extension
		Anthogyr	Astra Tech & Euroteknika	Nobel Active & Replace CC	Nobel Replace	Tekka Inkone	Tekka Progress & SERF EVL	Zimmer Screw Vent & MIS	Biotech Kontakt
	Healing screw	X	X	X	X			X	X
	Cover screw		X		X				
	Transfer	X	X	X		X		X	
	Analog	X	X	X	X	X	X	X	
Screw-retained	Multi Abutment	X	X	X		X	X	X	
	Burnable tube	X	X	X		X	X	X	
	Titanium tube	X	X	X		X	X	X	
Cement-retained	Burnable abutment				X		X	X	
	Temporary abutment		X	X	X	X	X		
	Straight Abutment	X	X	X	X	X	X	X	
	Anguled abutment	X	X	X	X	X	X	X	
CAD CAM	Base CAD CAM	X	X	X		X		X	X



COMPATIBLE WITH ANTHOGRYR AXIOM



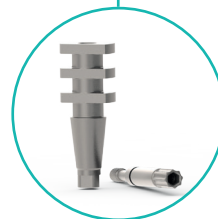
HEALING SCREW
AND COVER SCREW



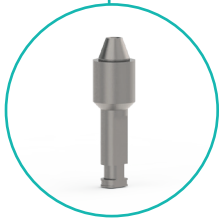
SCREW-RETAINED

CEMENT-RETAINED

TRANSFERS



ANALOGS



ABUTMENTS



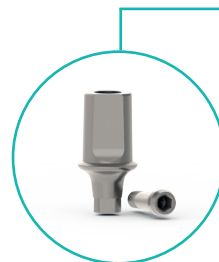
Multi
Abutment



Titanium Tube



Burnable Tube



Standard
Abutment



Angulated
Abutment

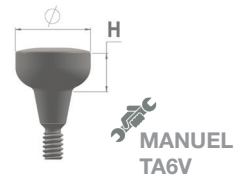
COMPATIBLE WITH ANTHOGRYR AXIOM

HEALING SCREW

Ø (mm)	H (mm)	Reference
4	2.5	AA70-4H25
	3.5	AA70-4H35
5	1.5	AA70-5H15
	2.5	AA70-5H25
	3.5	AA70-5H35
6	4.5	AA70-5H45
	1.5	AA70-6H15
	2.5	AA70-6H25
	3.5	AA70-6H35
	4.5	AA70-6H45



PU TTC	
Per 1	Per 5 -10%
19€90	17€90



TRANSFER*

Type	Reference
Pick up Standard	AA66



PU TTC	
Per 1	Per 5 -10%
29€80	24€83



ANALOG

Type	Reference
Standard	AA01
Multi Abutment	AA02



PU TTC	
Per 1	Per 5 -10%
18€60	16€74

MULTI ABUTMENT

H (mm)	Reference
1.5	AA40-H15
2.5	AA40-H25
3.5	AA40-H35



PU TTC	
Per 1	Per 5 -10%
48€10	43€30



BURNABLE TUBE *

Type	Reference
Burnable tube Rotational Multi abutment	AA38



PU TTC	
Per 1	Per 5 -10%
17€40	15€66



TITANIUM TUBE *

Type	Reference
Titanium tube Rotational Multi Abutment	AA39



PU TTC	
Per 1	Per 5 -10%
25€00	22€50



STANDARD ABUTMENT *

Ø (mm)	H (mm)	Reference
4	1.5	AA16-4H1
	3.5	AA16-4H3
5	1.5	AA16-5H1
	3.5	AA16-5H3
6	2.5	AA16-6H2
	3.5	AA16-6H3



PU TTC	
Per 1	Per 5 -10%
42€90	38€60



ANGULATED ABUTMENT 7° *

Ø (mm)	H (mm)	Reference
4	1	AA25-4H1
	3	AA25-4H3
5	1	AA25-5H1
	3	AA25-5H3

PU TTC	
Per 1	Per 5 -10%
61€20	55€10



ANGULATED ABUTMENT 15° *

Ø (mm)	H (mm)	Reference
4	1	AA27-4H1
	3	AA27-4H3
5	1	AA27-5H1
	3	AA27-5H3



PU TTC	
Per 1	Per 5 -10%
61€20	55€10



*Final screw included



HEALING SCREW
AND COVER
SCREW



SCREW-RETAINED

CEMENT-RETAINED

TRANSFERS

ANALOGS

ABUTMENTS

Multi Abutment



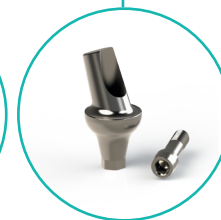
Burnable Tube



Titanium Tube



Esthetic Abutment



Angulated Abutment



CAD CAM Base*

➤ HEALING

HEALING SCREW

Ø (mm)	H (mm)	Reference	
		Ocean 3.5/4.0	Lilas 4.5/5.0
4	2	AS70-OC-4H2	-
	4	AS70-OC-4H4	AS70-LI-4H4
	6	AS70-OC-4H6	AS70-LI-4H6
4,5	3	AS70-OC-45H3	-
	4	AS70-OC-45H4	-
	5	AS70-OC-45H5	-
	6	AS70-OC-45H6	-
5,5	2	AS70-OC-55H2	AS70-LI-55H2
	3	AS70-OC-55H3	AS70-LI-55H3
	4	AS70-OC-55H4	AS70-LI-55H4
	5	AS70-OC-55H5	AS70-LI-55H5
	6	AS70-OC-55H6	AS70-LI-55H6
6,5	2	-	AS70-LI-65H2
	3	-	AS70-LI-65H3
	4	AS70-OC-65H4	AS70-LI-65H4
	5	-	AS70-LI-65H5
	6	AS70-OC-65H6	AS70-LI-65H6

PU TTC	
Per 1	Per 5 -10%
19€90	17€91



COVER SCREW

Reference	
Ocean 3.5/4.0	Lilas 4.5/5.0
AS71-OC	AS71-LI



PU TTC	
Per 1	Per 5 -10%
19€20	17€30

➤ IMPRESSION

TRANSFER*

Type	Reference	
	Ocean 3.5/4.0	Lilas 4.5/5.0
Standard Pick-up	AS66-OC	AS66-LI
Multi Abutment Pick-up	AS68	



PU TTC	
Per 1	Per 5 -10%
29€80	24€83



*Final screw included

COMPATIBLE WITH ASTRA TECH & EUROTEKNIKA

ANALOG

Type	Reference	
	Ocean 3.5/4.0	Lilas 4.5/5.0
Standard	AS01-OC	AS01-LI
Multi Abutment	AS02	



PU TTC	
Per 1	Per 5 -10%
18€60	16€74



SCREW-RETAINED

UNIT ABUTMENT 20°

H (mm)	Reference	
	Ocean 3.5/4.0	Lilas 4.5/5.0
0,5	AS40-OC-H05	AS40-LI-H05
1	AS40-OC-H1	AS40-LI-H1
2	AS40-OC-H2	AS40-LI-H2
4	AS40-OC-H4	AS40-LI-H4



PU TTC	
Per 1	Per 5 -10%
68€90	62€00



BURNABLE TUBE*

Type	Reference	
	Ocean 3.5/4.0	Lilas 4.5/5.0
Burnable tube Rotational Mutli abutment	AS38	



PU TTC	
Per 1	Per 5 -10%
17€40	15€66



PACK ABUTMENT + TUBE



PU TTC	
Per 1	Per 5 -10%
74€90	67€40

TITANIUM TUBE*

Type	Reference	
	Ocean 3.5/4.0	Lilas 4.5/5.0
Titanium tube Rotational Mutli abutment	AS39	



PU TTC	
Per 1	Per 5 -10%
25€00	22€50





CEMENT-RETAINED

TEMPORARY ABUTMENT*

Type	Reference	
	Ocean 3.5/4.0	Lilas 4.5/5.0
Anti-rotational	AS56-OC	AS56-LI



PU TTC	
Per 1	Per 5 -10%
39€80	35€80

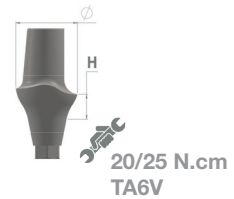


ESTHETIC ABUTMENT*

Ø (mm)	H (mm)	Reference	
		Ocean 3.5/4.0	Lilas 4.5/5.0
4,5	1,5	AS17-OC-45H15	-
	3	AS17-OC-45H3	-
5,5	1,5	AS17-OC-55H15	AS17-LI-55H15
	3	AS17-OC-55H3	AS17-LI-55H3
6,5	1,5	AS17-OC-65H15	AS17-LI-65H15
	3	AS17-OC-65H3	AS17-LI-65H3



PU TTC	
Per 1	Per 5 -10%
78€90	71€00

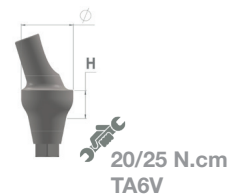


ANGULATED ABUTMENT 20°*

Ø (mm)	H (mm)	Reference	
		Ocean 3.5/4.0	Lilas 4.5/5.0
4,5	3,5	AS28-OC-45H35	-
5,5		AS28-OC-55H35	AS28-LI-55H35
6,5		-	AS28-LI-65H35



PU TTC	
Per 1	Per 5 -10%
89€10	80€20



UNIVERSAL ABUTMENT*

Reference	
Ocean	Lilas
AS19-OC	AS19-LI



PU TTC	
Per 1	Per 5 -10%
48€80	43€92



*Final screw included



EXTENSION BIOTECH DENTAL

HEALING SCREW

Ø (mm)	H (mm)	Reference
4	1	BK70-4H1
	3	BK70-4H3
	5	BK70-4H5
5	1	BK70-5H1
	3	BK70-5H3
	5	BK70-5H5
6,5	2	BK70-65H2
	3	BK70-65H3
	5	BK70-65H5

PU TTC	
Per 1	Per 5 -10%
15€00	13€50



 25 N.cm
TA6V





HEALING
SCREW



SCREW-RETAINED

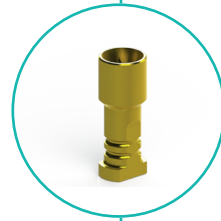
CEMENT-RETAINED



TRANSFERS



ANALOGS



ABUTMENTS



Multi Abutment



Burnable Tube



Titanium Tube



Esthetic
Abutment



Angulated
Abutment



CAD CAM Base*

*see page 38

COMPATIBLE WITH NOBEL ACTIVE & REPLACE CC

HEALING

HEALING SCREW



Plateform	H (mm)	Reference		
		Ø 3 mm	Ø 5 mm	Ø 6 mm
NP	3	NA70-NP-3H3	NA70-NP-5H3	-
	5	NA70-NP-3H5	NA70-NP-5H5	-
RP	3	NA70-RP-3H3	NA70-RP-5H3	NA70-RP-6H3
	5	NA70-RP-3H5	NA70-RP-5H5	NA70-RP-6H5

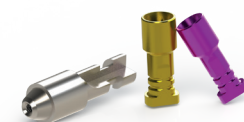
PU TTC	
Per 1	Per 5 -10%
19€90	17€90



IMPRESSION

ANALOG

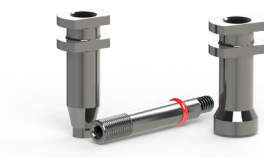
Plateform	Type	Reference
NP	Standard	NA01-NP
RP		NA01-RP
-	Multi Abutment	NA02



PU TTC	
Per 1	Per 5 -10%
18€60	16€74

TRANSFER*

Plateform	Type	Reference
NP	Pick-up Standard	NA66-NP
RP		NA66-RP
-	Pick-up Multi Abutment	NA68



PU TTC	
Per 1	Per 5 -10%
29€80	24€83



SCREW-RETAINED

MULTI ABUTMENT

Plateform	H (mm)	Reference
NP	1,5	NA40-NP-H15
	2,5	NA40-NP-H25
	3,5	NA40-NP-H35
	4,5	NA40-NP-H45
RP	1,5	NA40-RP-H15
	2,5	NA40-RP-H25
	3,5	NA40-RP-H35
	4,5	NA40-RP-H45



PU TTC	
Per 1	Per 5 -10%
68€80	61€90



BURNABLE TUBE *

Type	Reference
Burnable tube Rotational Multi abutment	NA38



PU TTC	
Per 1	Per 5 -10%
17€40	15€66



TITANIUM TUBE *

Type	Reference
Titanium tube Rotational Multi abutment	NA39



PU TTC	
Per 1	Per 5 -10%
25€00	22€50



CEMENT-RETAINED

TEMPORARY ABUTMENT *

Plateform	Type	Reference
NP	Anti-rotationnel	NA56-NP
RP		NA56-RP



PU TTC	
Per 1	Per 5 -10%
32€90	29€60



*Final screw included

COMPATIBLE WITH NOBEL ACTIVE & REPLACE CC

ESTHETIC ABUTMENT*

Plateform	H (mm)	Reference
NP	1,5	NA17-NPH15
	3	NA17-NPH3
	4,5	NA17-NPH45
RP	1,5	NA17-RPH15
	3	NA17-RPH3
	4,5	NA17-RPH45



PU TTC	
Per 1	Per 5 -10%
63€20	56€90



ANGULATED ABUTMENT 15°*

Plateform	H (mm)	Reference
NP	1,5	NA27-NPH15
	3	NA27-NPH3
RP	1,5	NA27-RPH15
	3	NA27-RPH3
	4,5	NA27-RPH45



PU TTC	
Per 1	Per 5 -10%
74€60	67€15



COMPATIBLE WITH NOBEL REPLACE

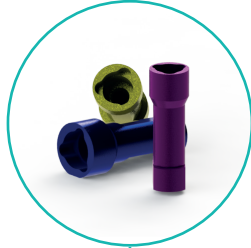


HEALING
SCREW

COVER
SCREW



ANALOGS



ABUTMENTS



Burnable Abutment



Standard
Abutment



Esthetic
Abutment



Angulated
Abutment

COMPATIBLE WITH NOBEL REPLACE

HEALING

HEALING SCREW

Platform	H (mm)	Reference	
		Standard	Large
NP	3	NR70-NPH3	NR70L-NPH3
	5	NR70-NPH5	NR70L-NPH5
RP	3	NR70-RPH3	NR70L-RPH3
	5	NR70-RPH5	NR70L-RPH5
WP	3	NR70-WPH3	NR70L-WPH3
	5	NR70-WPH5	NR70L-WPH5



PU TTC	
Per 1	Per 5 -10%
19€90	17€90



HEALING SCREW

Platform	Reference
NP	NR71-NP
RP	NR71-RP



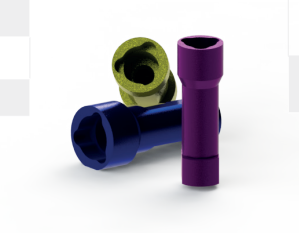
PU TTC	
Per 1	Per 5 -10%
19€20	17€30



IMPRESSION

ANALOG

Platform	Reference
NP	NR01-NP
RP	NR01-RP
WP	NR01-WP



PU TTC	
Per 1	Per 5 -10%
18€60	16€74

CEMENT-RETAINED

BURNABLE ABUTMENT*

Platform	Type	Reference
NP	Anti-rotational	NR36-NP
RP		NR36-RP
WP		NR36-WP



PU TTC	
Per 1	Per 5 -10%
19€90	17€90



TEMPORARY ABUTMENT*

Platform	Type	Reference
NP	Anti-rotational	NR56-NP
RP		NR56-RP
WP		NR56-WP



PU TTC	
Per 1	Per 5 -10%
32€90	29€60



PACK TEMPORARY ABUTMENT + BURNABLE ABUTMENT

PU TTC	
Per 1	Per 5 -10%
39€90	35€90



STANDARD ABUTMENT*

Platform	H (mm)	Reference
NP	1	NR16-NPH1
	2	NR16-NPH2
RP	1	NR16-RPH1
	2	NR16-RPH2
	3	NR16-RPH3
WP	1	NR16-WPH1
	2	NR16-WPH2



PU TTC	
Per 1	Per 5 -10%
49€90	44€90



*Final screw included

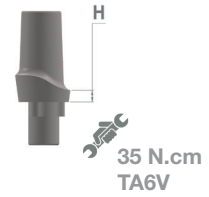
COMPATIBLE WITH NOBEL REPLACE

ESTHETIC ABUTMENT*

Plateform	H (mm)	Reference
NP	1	NR17-NPH1
	2	NR17-NPH2
RP	1	NR17-RPH1
	2	NR17-RPH2
	3	NR17-RPH3
WP	1	NR17-WPH1
	2	NR17-WPH2



PU TTC	
Per 1	Per 5 -10%
63€20	56€90

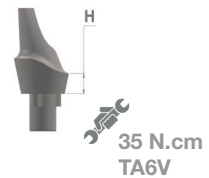


ANGULATED ABUTMENT 15°*

Plateform	H (mm)	Reference
NP	1	NR27-NPH1
	3	NR27-NPH3
RP	1	NR27-RPH1
	2	NR27-RPH2
	3	NR27-RPH3
WP	1	NR27-WPH1
	3	NR27-WPH3



PU TTC	
Per 1	Per 5 -10%
74€60	67€15



COMPATIBLE WITH TEKKA INKONE



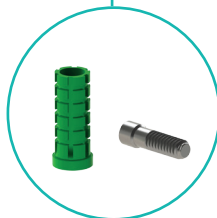
SCREW-RETAINED



Multi Abutment



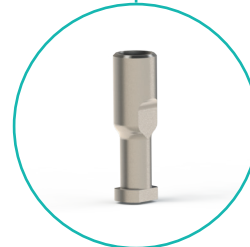
Burnable Tube



Titanium Tube

TRANSFERS

CEMENT-RETAINED



ANALOGS



ABUTMENTS



Standard Abutment



Angulated Abutment



CAD CAM Base*

*see page 38

COMPATIBLE WITH TEKKA INKONE

IMPRESSION

TRANSFER*

Type	Reference
Pick-Up Standard Short	TI66-SH
Pick-Up Standard Long	TI66-LG
Pop-Up	TI-67



PU TTC	
Per 1	Per 5 -10%
29€80	24€83



ANALOG

Type	Reference
Standard	TI01
Multi Abutment	TP02-34



PU TTC	
Per 1	Per 5 -10%
18€60	16€74

SCREW-RETAINED

MULTI ABUTMENT

H (mm)	Reference
0.7	TI40-H07
1,5	TI40-H15
3	TI40-H3
5	TI40-H5



PU TTC	
Per 1	Per 5 -10%
23€90	21€50



BURNABLE TUBE*

Type	Reference
Burnable tube Rotational Multi Abutment	TP38-34



PU TTC	
Per 1	Per 5 -10%
17€40	15€66



*Final screw included

TITANIUM TUBE*

Type	Reference
Titanium Tube Rotational Multi Abutment	TP39-34



PU TTC	
Per 1	Per 5 -10%
25€00	22€50



PACK ABUTMENT + TUBE



+



PU TTC	
Per 1	Per 5 -10%
29€50	26€55



+



PU TTC	
Per 1	Per 5 -10%
34€30	30€90



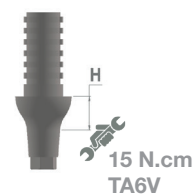
CEMENT-RETAINED

TEMPORARY ABUTMENT*

Type	H (mm)	Reference
Anti-rotational	1,5	TI56-H15
	3	TI56-H3



PU TTC	
Per 1	Per 5 -10%
24€90	22€40



*Final screw included

COMPATIBLE WITH TEKKA INKONE

STANDARD ABUTMENT*

Platform	H (mm)	Reference
4	0,7	TI16-4H07
	1,5	TI16-4H15
	2,2	TI16-4H22
	3	TI16-4H3
	4	TI16-4H4
	5	TI16-4H5
5	0,7	TI16-5H07
	1,5	TI16-5H15
	2,2	TI16-5H22
	3	TI16-5H3
	4	TI16-5H4
	5	TI16-5H5
6,5	1,5	TI16-65H15
	2,2	TI16-65H22
	3	TI16-65H3
	4	TI16-65H4

PU TTC	
Per 1	Per 5 -10%
36€20	32€60



ANGULATED ABUTMENT*

α	Platform	H (mm)	Reference
7°	4	1,5	TI25-4H15
		2,2	TI25-4H22
		3	TI25-4H3
		4	TI25-4H4
	5	0,7	TI25-5H07
		1,5	TI25-5H15
		2,2	TI25-5H22
		3	TI25-5H3
		4	TI25-5H4
		5	TI25-5H5
15°	4	1,5	TI27-4H15
		2,2	TI27-4H22
		3	TI27-4H3
		4	TI27-4H4
	5	0,7	TI27-5H07
		1,5	TI27-5H15
		3	TI27-5H3
		4	TI27-5H4
		5	TI27-5H5

PU TTC	
Per 1	Per 5 -10%
68€10	61€30



*Final screw included

COMPATIBLE WITH TEKKA PROGRESS & SERF EVL * *

**Please contact us for more information



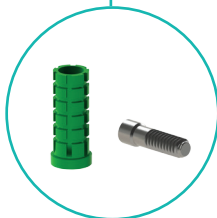
SCREW-RETAINED



Multi Abutment

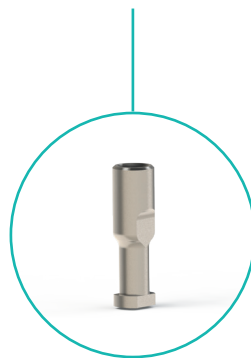


Burnable Tube



Titanium Tube

CEMENT-RETAINED



ANALOGS

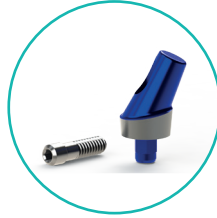
ABUTMENTS



Burnable Abutment



Standard Abutment



Angulated Abutment

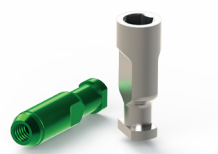
COMPATIBLE WITH TEKKA PROGRESS & SERF EVL * *

**Please contact us for more information

IMPRESSION

ANALOG

Platform	Type	Reference
3,4	Standard	TP01-34**
4		TP01-4**
4,5		TP01-45
5		TP01-5**



PU TTC	
Per 1	Per 5 -10%
18€60	16€74

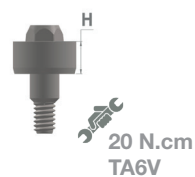
SCREW-RETAINED

MULTI ABUTMENT

Platform	H (mm)	Reference
3,4	1	TP40-34H1
	3	TP40-34H3
4	1	TP40-4H1
	3	TP40-4H3
4,5	1	TP40-45H1
	3	TP40-45H3
5	1	TP40-5H1
	3	TP40-5H3



PU TTC	
Per 1	Per 5 -10%
23€20	20€88



BURNABLE TUBE*

Platform	Type	Reference
3,4	Burnable tube Rotational Multi Abutment	TP38-34
4		TP38-4
4,5		TP38-45
5		TP38-5



PU TTC	
Per 1	Per 5 -10%
17€40	15€66



TITANIUM TUBE*

Platform	Type	Reference
3,4	Titanium tube Rotational Multi Abutment	TP39-34
4		TP39-4
4,5		TP39-45
5		TP39-5



PU TTC	
Per 1	Per 5 -10%
25€00	22€50



PACK ABUTMENT + BURNABLE ABUTMENT



PU TTC	
Per 1	Per 5 -10%
30€10	27€10



PU TTC	
Per 1	Per 5 -10%
36€85	33€20

CEMENT-RETAINED

TEMPORARY ABUTMENT*

Type	Platform	Reference
Anti-Rotational	3,4	TP56-34
	4	TP56-4
	4,5	TP56-45



PU TTC	
Per 1	Per 5 -10%
22€90	20€60



BURNABLE ABUTMENT*

Type	Platform	Reference
Anti-Rotational	3,4	TP36-34
	4	TP36-4
	4,5	TP36-45
	5	TP36-5



PU TTC	
Par 1	Par 5 -10%
19€90	17€90



*Final screw included

COMPATIBLE WITH TEKKA PROGRESS & SERF EVL * *

**Please contact us for more information

BURNABLE ABUTMENT SERF*

Type	Platform	Reference
Anti-rotational	3,3	SE36-33
	4	SE36-4
	5	SE36-5



PU TTC	
Per 1	Per 5 -10%
19€90	17€90

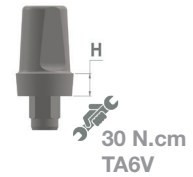


STANDARD ABUTMENT*

Platform	H (mm)	Reference
3,4	0,5	TP16-34H05**
	2	TP16-34H2**
4	0,5	TP16-4H05**
	2	TP16-4H2**
4,5	0,5	TP16-45H05
	2	TP16-45H2
5	0,5	TP16-5H05**
	2	TP16-5H2**
6	0,5	TP16-6H05



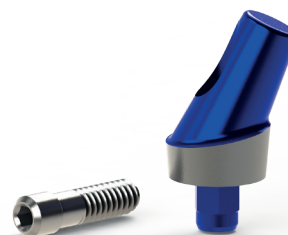
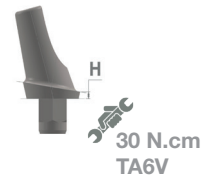
PU TTC	
Per 1	Per 5 -10%
36€20	32€60



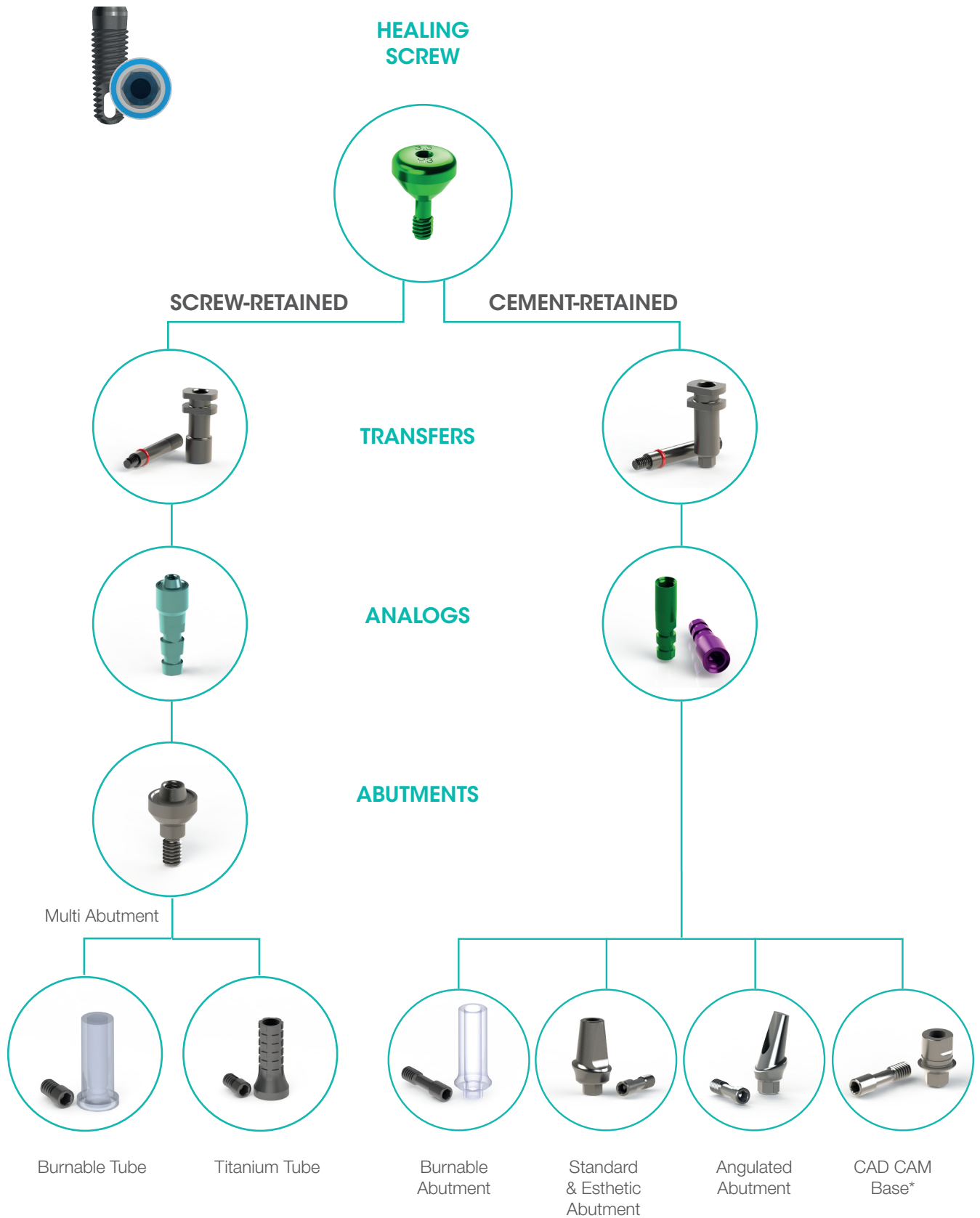
ANGULATED ABUTMENT 15° AND 25°*

α	Platform	H (mm)	Reference
15°	3,4	2	TP27-34H2
		3	TP27-34H3
	4	0,5	TP27-4H05
		1,5	TP27-4H15
		2,5	TP27-4H25
	4,5	0,5	TP27-45H05
		1,5	TP27-45H15
		2,5	TP27-45H25
	5	1,5	TP27-5H15
2,5		TP27-5H25	
25°	3,4	1,5	TP29-34H15
	4	1	TP29-4H1
		2	TP29-4H2
	4,5	1	TP29-45H1
		2	TP29-45H2
	5	1	TP29-5H1

PU TTC	
Per 1	Per 5 -10%
52€70	47€40



COMPATIBLE ZIMMER SCREW VENT & MIS



*see page 38

COMPATIBLE ZIMMER SCREW VENT & MIS

HEALING

HEALING SCREW

Plateform	Ø (mm)	H (mm)	Reference
3,5	3,5	3	ZI70-35-35H3
		5	ZI70-35-35H5
	4,5	3	ZI70-35-45H3
		5	ZI70-35-45H5
		7	ZI70-35-45H7
	5,5	3	ZI70-35-55H3
5		ZI70-35-55H5	
4,5	4,5	3	ZI70-45-45H3
		5	ZI70-45-45H5
		7	ZI70-45-45H7
	5,5	3	ZI70-45-55H3
		5	ZI70-45-55H5
	6,5	3	ZI70-45-65H3
		5	ZI70-45-65H5

PU TTC	
Per 1	Per 5 -10%
19€90	17€90



IMPRESSION

ANALOG

Plateform	Type	Reference
3,5	Standard	ZI01-35
4,5	Standard	ZI01-45
-	Multi Abutment	ZI02

PU TTC	
Per 1	Per 5 -10%
18€60	16€74



TRANSFER*

Plateform	Type	Reference
3,5	Pick-up Standard	ZI66-35
4,5	Pick-up Standard	ZI66-45
-	Pick-up Multi Abutment	ZI68

PU TTC	
Per 1	Per 5 -10%
29€80	24€83



*Final screw included



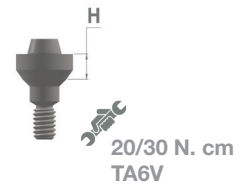
SCREW-RETAINED

CONICAL ABUTMENT

Plateform	H (mm)	Reference
3,5	0,75	ZI40-35H075
	2	ZI40-35H2
	3	ZI40-35H3
	4	ZI40-35H4
4,5	0,75	ZI40-45H075
	2	ZI40-45H2
	3	ZI40-45H3
	4	ZI40-45H4



PU TTC	
Per 1	Per 5 -10%
48€90	44€00



BURNABLE TUBE*

Type	Reference
Burnable Tube Rotational Multi Abutment	ZI38



PU TTC	
Per 1	Per 5 -10%
17€40	15€66



PACK ABUTMENT + TUBE

	+		<table border="1"> <thead> <tr> <th colspan="2">PU TTC</th> </tr> </thead> <tbody> <tr> <td>Par 1</td> <td>Par 5 -10%</td> </tr> <tr> <td>58€50</td> <td>52€65</td> </tr> </tbody> </table>	PU TTC		Par 1	Par 5 -10%	58€50	52€65
PU TTC									
Par 1	Par 5 -10%								
58€50	52€65								

TITANIUM TUBE*

Type	Reference
Titanium Tube Rotational Multi Abutment	ZI39



PU TTC	
Per 1	Per 5 -10%
25€00	22€50



*Final screw included

COMPATIBLE ZIMMER SCREW VENT & MIS

SCREW-RETAINED

BURNABLE ABUTMENT*

Plateform	Type	Reference
3,5	Anti-rotational direct implant	ZI36-35
4,5		ZI36-45



PU TTC	
Per 1	Per 5 -10%
19€90	17€90

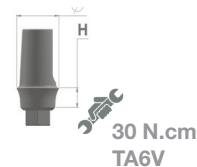


STANDARD ABUTMENT*

Plateform	Ø (mm)	H (mm)	Reference
3,5	4,5	1	ZII6-35-45H1
		2	ZII6-35-45H2
		3	ZII6-35-45H3
4,5	4,5	1	ZII6-45-45H1
		2	ZII6-45-45H2
		3	ZII6-45-45H3
	5,5	1	ZII6-45-55H1
		2	ZII6-45-55H2
		3	ZII6-45-55H3



PU TTC	
Per 1	Per 5 -10%
49€90	44€90

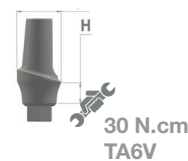


ESTHETIC ABUTMENT*

Plateform	Ø (mm)	H (mm)	Reference
3,5	4,5	1	ZII7-35-45H1
		2	ZII7-35-45H2
		3	ZII7-35-45H3
4,5	4,5	1	ZII7-45-45H1
		2	ZII7-45-45H2
		3	ZII7-45-45H3
	5,5	1	ZII7-45-55H1
		2	ZII7-45-55H2
		3	ZII7-45-55H3



PU TTC	
Per 1	Per 5 -10%
59€70	53€75



ANGULATED ABUTMENT 17°*

Platform	Ø (mm)	H (mm)	Reference
3,5	4,5	1	ZI28-35-45H1
		2	ZI28-35-45H2
		3	ZI28-35-45H3
4,5	4,5	1	ZI28-45-45H1
		2	ZI28-45-45H2
		3	ZI28-45-45H3
	5,5	1	ZI28-45-55H1
		2	ZI28-45-55H2

PU TTC	
Per 1	Per 5 -10%
69€²⁰	62€³⁰



UNIVERSAL ABUTMENT*

Platform	Ø (mm)	Reference
3,5	4,5	ZI15-35-45
	5,5	ZI15-35-55
4,5	5,5	ZI15-45-55
	6,5	ZI15-45-65

PU TTC	
Per 1	Per 5 -10%
49€⁹⁰	44€⁹⁰



*Final screw included



SOON AVAILABLE! MARCH 2017

**New product range coming soon!
Compatible with:**

Straumann Tissue Level



And to request at your needs always more, we enrich our compatible ranges Anthogyr, AstraTech, Nobel and Zimmer with new products.



NEW PRODUCTS COMING SOON !

ANTHOGYR

BASE

H (mm)	Type	Reference
1	Anti-rotational	AA18-H1
2		AA18-H2
3		AA18-H3



PU TTC	
Per 1	Per 5 -10%
39€80	35€80



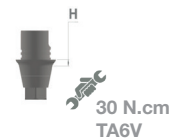
ASTRA

BASE

H (mm)	Type	Reference	
		Ocean 3,5/4,0	Lias 4,5/5,0
1	Anti-rotational	AS18-OC-H1	AS18-LI-H1
3		AS18-OC-H3	AS18-LI-H3



PU TTC	
Per 1	Per 5 -10%
39€80	35€80



BIOTECH DENTAL

BASE

Ø (mm)	H (mm)	Référence
3	1	K30PCADCAM1
	3	K30PCADCAM3
	5	K30PCADCAM5
3,6	0,5	KPCADCAM3605
	1	KPCADCAM3610
	2	KPCADCAM3620
	3	KPCADCAM3630
	5	KPCADCAM3650
	7	KPCADCAM3670



PU TTC	
Per 1	Per 5 -10%
55€00	49€50



NOBEL ACTIVE & REPLACE CC

BASE

Plateform	Type	Reference
NP	Anti-rotational	NA18-NP
RP		NA18-RP



PU TTC	
Per 1	Per 5 -10%
39€80	35€80



TEKKA INKONE

BASE

H (mm)	Type	Reference
1	Anti-rotational	TI18-H1
2		TI18-H2
3		TI18-H3



PU TTC	
Per 1	Per 5 -10%
39€80	35€80



ZIMMER

BASE

Plateform	Type	Reference
3,5	Anti-rotational	ZI18-35
4,5		ZI18-45



PU TTC	
Per 1	Per 5 -10%
39€80	35€80



COMPATIBLE CEREC



KONTACT® COMPATIBLE CEREC®

BASE

H (mm)	Type	References
1	Anti-rotational	BK18-H1
2		BK18-H2
3		BK18-H3

PU TTC	
Per 1	Per 5 -10%
48€00	43€20



KONTACT® COMPATIBLE CEREC®

SCANPOST

H (mm)	Types	References
1	Anti-rotational	BK97-H1
2		BK97-H2
3		BK97-H3

PU TTC	
Per 1	Per 5 -10%
53€00	47€70



* Tibases and scanposts are compatible with the scanning caps for Bluecam® and Omnicam® cameras. Definitive screw included.

FINAL SCREW

ANTHOGYR

Type	Reference
Screw esthetic Straight abutment	AA85-01
Screw tube multi abutment	AA85-02

PU TTC	
Per 1	Per 5 -10%
8€80	7€90

ASTRA

Type	Reference
Screw esthetic Straight abutment LI	AS85-LI01
Screw esthetic Straight abutment OC	AS85-OC01
Screw tube multi abutment	AS85-02

PU TTC	
Per 1	Per 5 -10%
8€80	7€90

NOBEL ACTIVE

Type	Reference
Screw esthetic Straight abutment NP	NA85-NP01
Screw esthetic Straight abutment RP	NA85-RP01
Screw tube multi abutment	NA85-02

PU TTC	
Per 1	Per 5 -10%
8€80	7€90

NOBEL REPLACE

Type	Reference
Screw esthetic Straight abutment NP	NR85-NP
Screw esthetic Straight abutment RP WP	NR85-RPWP

PU TTC	
Per 1	Per 5 -10%
8€80	7€90

TEKKA INKONE

Type	Reference
Finale screw TP	TI85-01
Screw tube esthetic Straight abutment	TP85-02

PU TTC	
Per 1	Per 5 -10%
8€80	7€90

TEKKA PROGRESS

Type	Reference
Finale screw TP	TP85-01
Screw tube multi abutment	TP85-02

PU TTC	
Per 1	Per 5 -10%
8€80	7€90

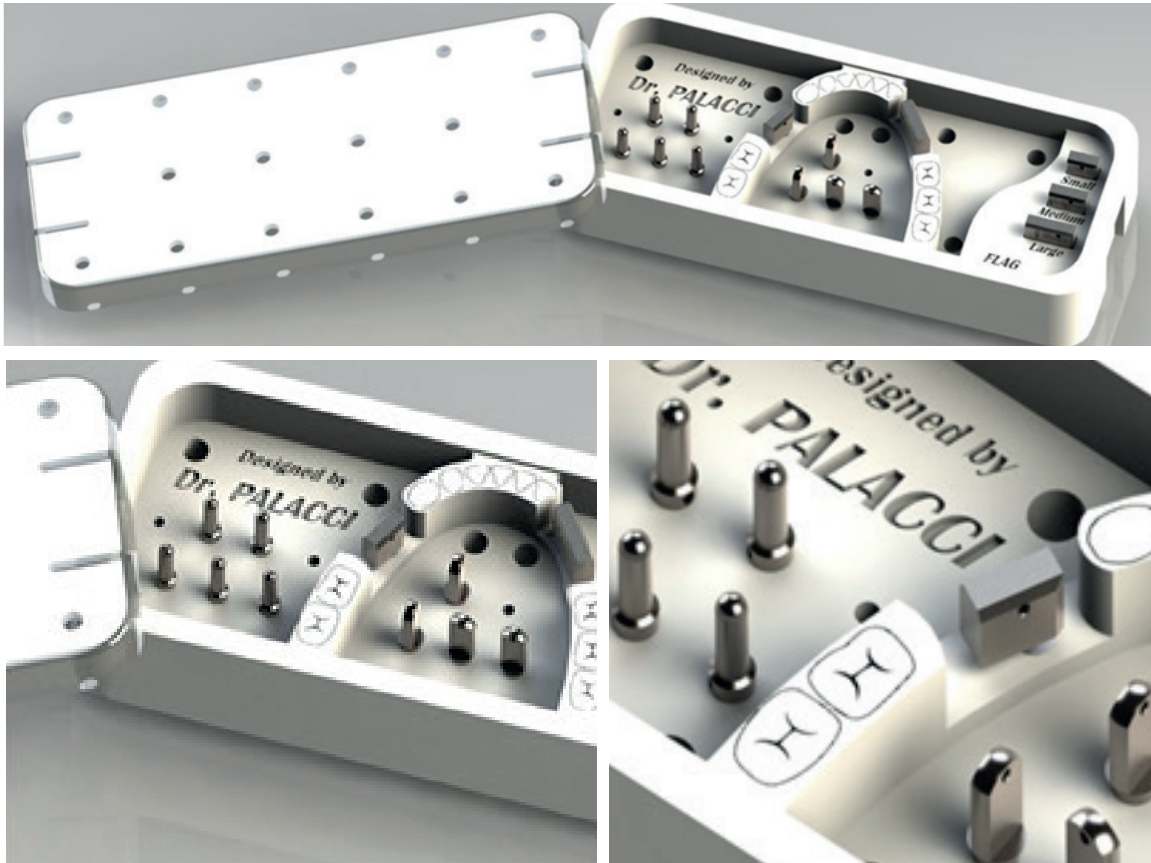
ZIMMER

Type	Reference
Finale screw angulated abutment	ZI85-01-A
Finale screw esthetic Straight abutment	ZI85-01-D
Screw tube multi abutment	ZI85-02

PU TTC	
Per 1	Per 5 -10%
8€80	7€90

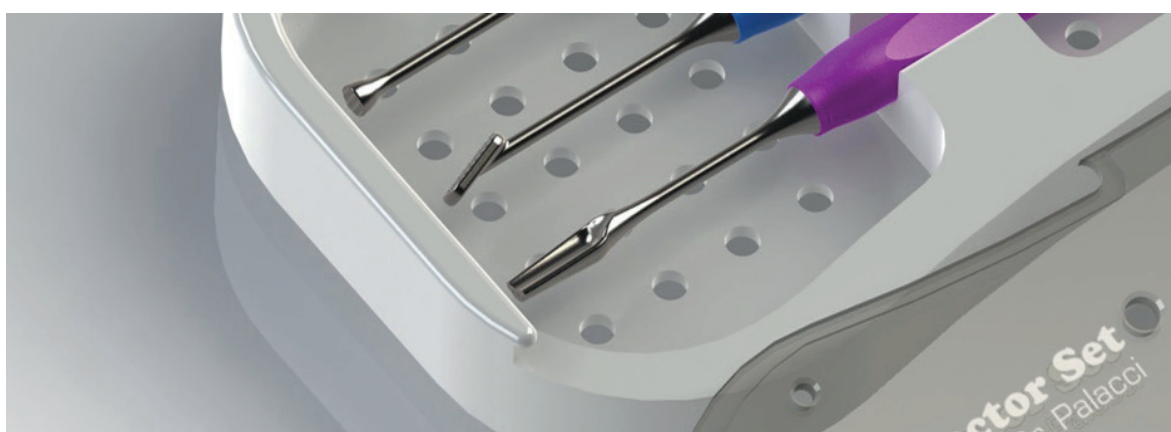
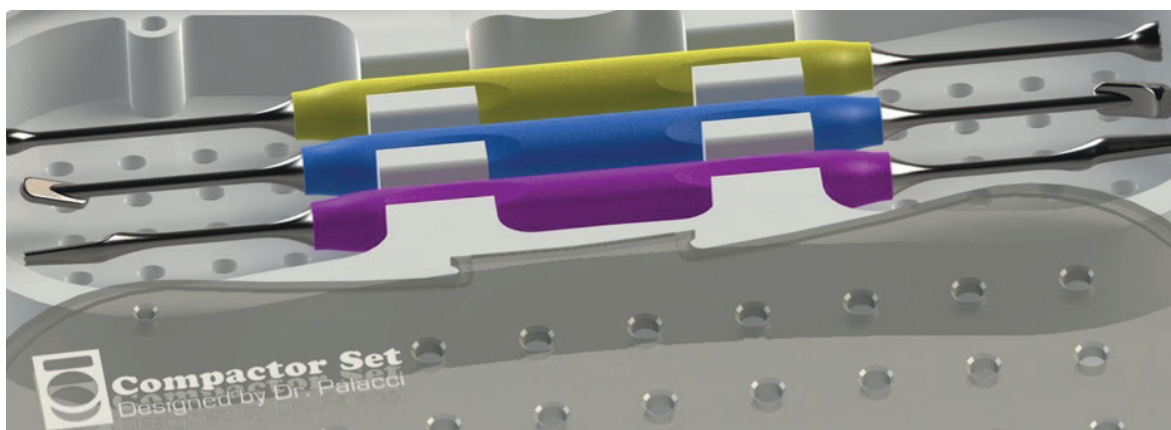
INSTRUMENTS

➤ SURGICAL GUIDES



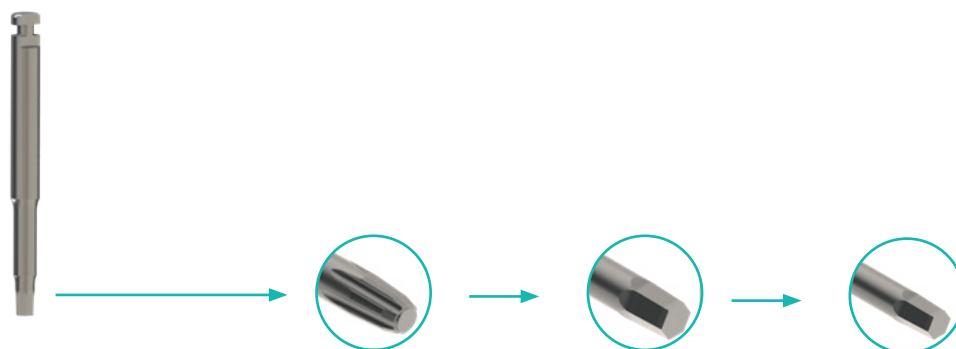
Description	Reference	PU TTC
Premium Set including 6 guide pins, 4 milestones, 3 flags: 8, 10 & 13 mm, 1 premium tray	PA-BD	792€
Standard Set including 6 guide pins, 4 milestones, 3 flags: 8, 10 & 13 mm, 1 standard tray	PA-BD-S	552€
Essential Set including 3 milestones, 3 flags: 8, 10 & 13 mm, 1 standard support	PA-BD-E	271€
Flags: 8, 10 & 13 mm	PA-D-8/10/13	52€
Milestones	PA-B-H2	35€
Guide Pins	PA-G0	31€





➤ SURGICAL COMPACTORS



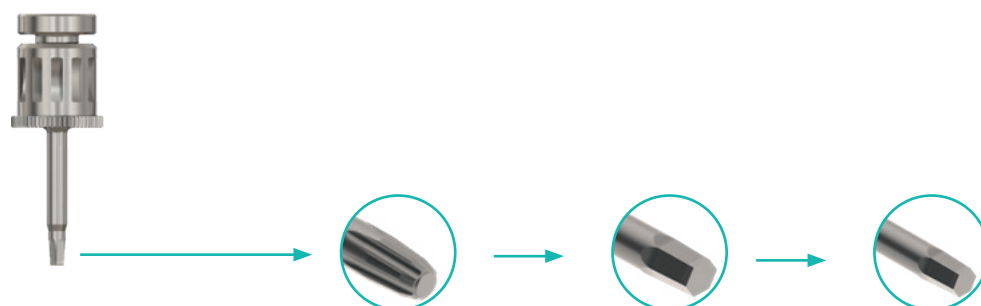
Description	Reference	PU TTC
Premium Set including 1 aspherical compactor, 1 cylindrical compactor, 1 lateral compactor, 1 premium tray	PA-BC	828€
Standard Set including 1 aspherical compactor, 1 cylindrical compactor, 1 lateral compactor, 1 standard tray	PA-BC-S	588€
Aspherical compactor	PA-CDL	156€
Cylindrical compactor	PA-CCY	150€
Lateral compactor	PA-CLA	165€





CONTRA-ANGLE SCREWDRIVER



Compatibility		Description	Reference	PU TTC
AstraTech		Screwdriver Hexagonal 1,27 mm Length 12 mm	MM-TCA-127-M	22€
Zimmer		Screwdriver Hexagonal 1,25 mm Length 12 mm	MM-TCA-125-M	
Tekka Anthogyr		Screwdriver Hexagonal 1,20 mm Length 12 mm	MM-TCA-120-M	
Nobel		Screwdriver Torx Type for Nobel screw Length 12 mm	MM-TCA-NO-M	

MANUAL SCREWDRIVER



Compatibility		Description	Reference	PU TTC
AstraTech		Screwdriver Hexagonal 1,27 mm Length 12 mm	MM-TM-127-M	39€
Zimmer		Screwdriver Hexagonal 1,25 mm Length 12 mm	MM-TM-125-M	
Tekka Anthogyr		Screwdriver Hexagonal 1,20 mm Length 12 mm	MM-TM-120-M	
Nobel		Screwdriver Torx Type for Nobel screw Length 12 mm	MM-TM-NO-M	

DYNAMOMETRIC KEY



Description	Reference	PU TTC
Adjustable Dynamometric Key	CD	150€

TO MAKE AN ORDER, PLEASE CONTACT OUR TEAM



Our web store: www.denteo.fr



contact@denteo.fr



Location: 23, Boucle de la Ramée,
38070 Saint Quentin Fallavier - France



Customer Service: +33 (0)4.13.22.82.55

A series of horizontal dotted lines for writing notes, spanning the width of the page.



23, Boucle de la Ramée
38070 Saint Quentin Fallavier - France



Tél.: +33 (0)4 13 22 82 55



contact@denteo.fr



www.denteo.fr



UPPERSiDE

133, Boulevard Haussmann
75008 Paris

contact@groupe-upperside.com

www.groupe-upperside.com



AENOR Cert. 73017

DEN+BR-EN_Rév.03_09/2017



BIOTECH DENTAL